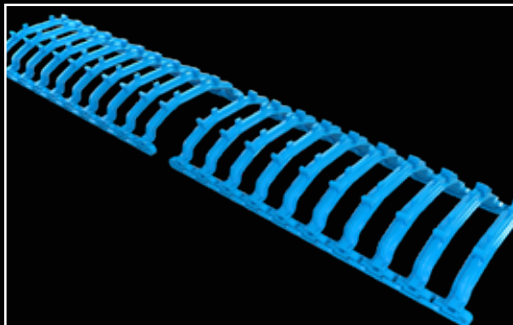


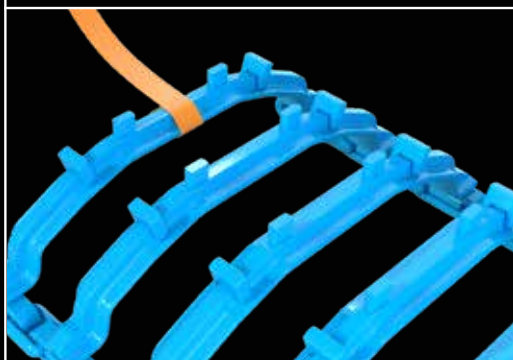
WHEEL TRACK - MOUNTING INSTRUCTIONS



1
Layout two sections of the track with the top of the cross members facing up.



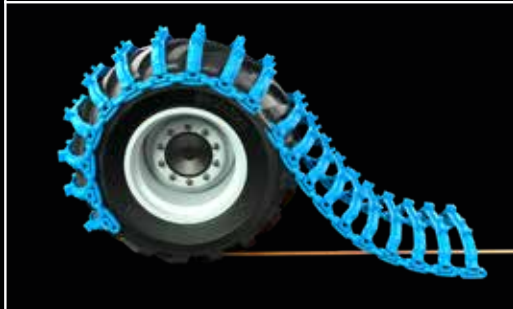
2
Join the two sections using long track locks. Note! Make sure the back plate is installed on the inside.



3
Connect a long chain to the centre of the cross member at the end with the track locks.



4
Position the machine so that the wheel is lined up with the track and wrap the chain around the centre of the tire. Place the loose end of the chain on ground in front of the tire.



5
Pull the track around the top of the wheel by driving over the chain.

WHEEL TRACK - MOUNTING INSTRUCTIONS



6
Using the track installation tool, tighten the track until a track lock can be installed. Make sure the track locks are installed from the outside with the backings against the tire.



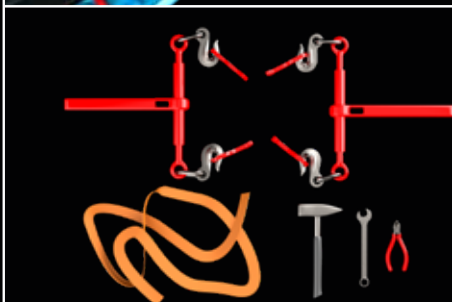
7
Install the bolt so that the nut is on the inside of the link system. This will prevent damage to the thread during machine operation.



8
Keep the tracks as tight as possible on the tires. During the first days of operation, the paint and any rough surfaces in the link system will wear smooth requiring the tracks to be tightened again. Keep tires inflated to maximum allowable pressure as recommended by the manufacturer.



9
Three lengths of track locks are provided to ensure proper track tension. If the tires are worn, it may be necessary to remove a cross member.



10
Tools needed:
-Track installation tools
-Long Chain
-Hammer
-22mm wrench
-22mm socket/ratchet